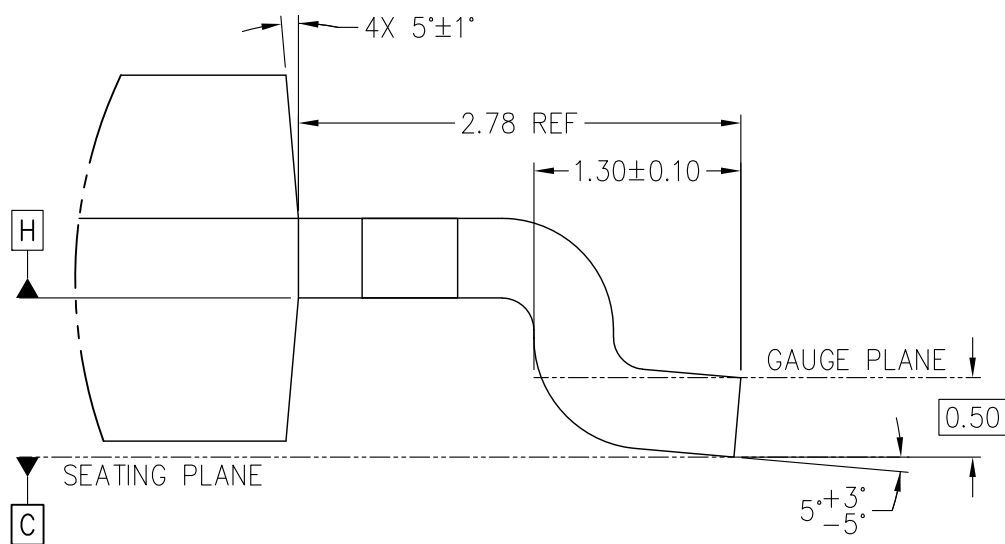


VIEW A-A

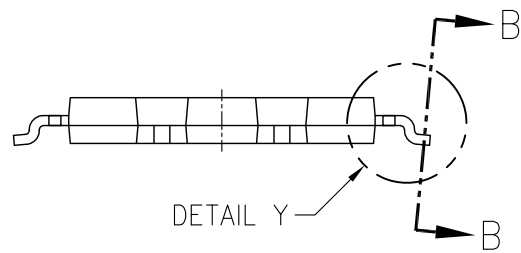


DETAIL Y

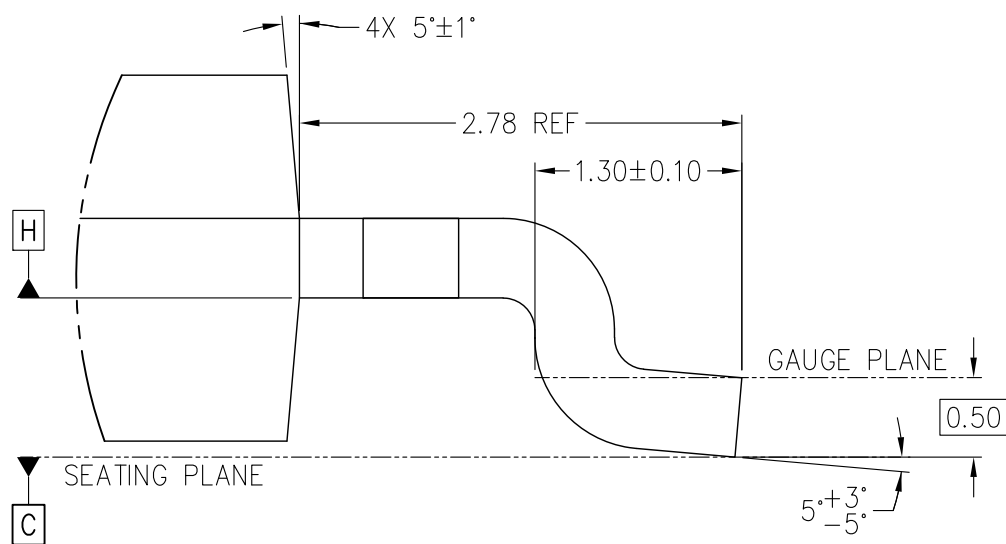
VARIANT A



BOTTOM VIEW
VARIANT B HEATSLUG DOWN

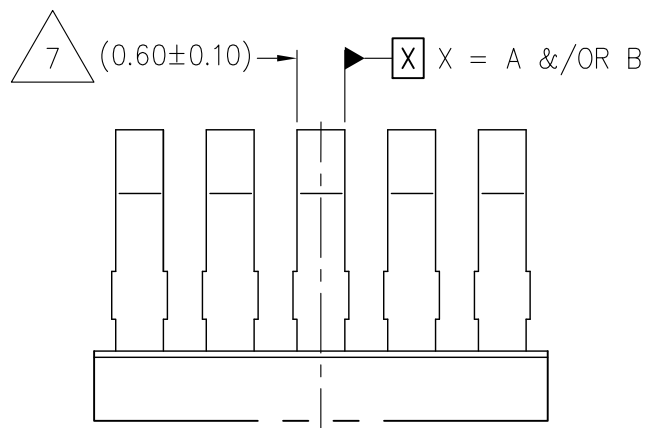
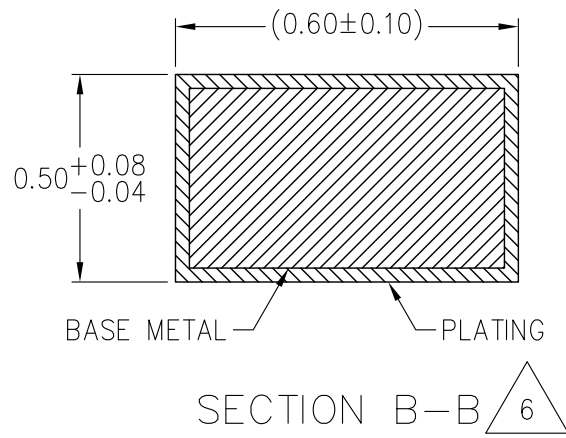


VIEW C-C



DETAIL Y

VARIANT B



DETAIL Z
ODD LEADS PER SIDE

TABLE 1

SYMBOL	VARIATION A–A			VARIATION A–B			VARIATION A–C			NOTES
	HEAT SLUG UP			HEAT SLUG UP			HEAT SLUG UP			
	PMSO–E11_I1p14– R6p6x15p5Z2p5– N21p11T0p58			PMSO–E23_I1p14– R15p1x15p5Z2p5– N21p11T0p58			PMSO–E23_I1p14– R15p1x15p5Z2p5– N21p11T0p58			
	MIN	NOM	MAX	MIN	NOM	MAX	MIN	NOM	MAX	
X	6.40	6.50	6.60	14.90	15.00	15.10	14.90	15.00	15.10	3, 4
X1	5.22	5.32	5.42	13.10	13.20	13.30	13.10	13.20	13.30	10
X2	5.22	5.32	5.42	11.91	12.01	12.11	11.91	12.01	12.11	10
Y1	10.50	10.60	10.70	9.23	9.33	9.43	10.23	10.33	10.43	
N	10			22			22			
NOTES	1, 2			1, 2			1, 2			
REF	11–1023			11–1023			11–1023			
ISSUE	A			A			A			

TABLE 2

SYMBOL	VARIATION B–A			
	HEAT SLUG DOWN			
	PMS0–E23_I1p14– R15p1x15p5Z2p5– N21p11T0p58			
	MIN	NOM	MAX	
X	14.90	15.00	15.10	3, 4
X1	13.10	13.20	13.30	10
X2	11.91	12.01	12.11	10
Y1	10.23	10.33	10.43	
N	22			
NOTES	1, 2			
REF	11–1023			
ISSUE	A			

NOTES:

1. DIMENSIONING AND TOLERANCING PER ASME Y14.5–2009.

2. ALL DIMENSIONS ARE IN MILLIMETERS (ANGLES IN DEGREES).



X DIMENSION DOES NOT INCLUDE MOLD FLASH, PROTRUSION OR GATE BURRS. MOLD FLASH, PROTRUSION OR GATE BURR SHALL NOT EXCEED 0.15 MM PER END. 15.40±0.10 DIMENSION DOES NOT INCLUDE INTERLEAD FLASH OR PROTRUSION. INTERLEAD FLASH OR PROTRUSION SHALL NOT EXCEED 0.25 MM PER SIDE. X AND 15.40±0.10 DIMENSIONS ARE DETERMINED AT DATUM H.



THE PACKAGE BOTTOM MAY BE SMALLER THAN THE PACKAGE TOP, X AND 15.40±0.10 DIMENSIONS ARE DETERMINED AT THE OUTERMOST EXTREMES OF THE PLASTIC BODY EXCLUSIVE OF MOLD FLASH, TIE BAR BURRS, GATE BURRS AND INTERLEAD FLASH, BUT INCLUDING ANY MISMATCH BETWEEN THE TOP AND BOTTOM OF THE PLASTIC BODY.

5. N IS THE MAXIMUM NUMBER OF TERMINAL POSITION FOR THE SPECIFIED PACKAGE



THIS DIMENSION APPLIES TO THE FLAT SECTION OF THE LEAD BETWEEN 0.10 TO 0.25 MM FROM THE LEAD TIP.



THIS DIMENSION DOES NOT INCLUDE DAMBAR PROTRUSION. ALLOWABLE DAMBAR PROTRUSION SHALL BE 0.10MM TOTAL IN EXCESS OF THE TERMINAL WIDTH DIMENSION MAXIMUM MATERIAL CONDITION. THE DAMBAR MAY NOT BE LOCATED ON THE LOWER RADIUS OF THE FOOT.



PIN 1 IDENTIFIER MUST BE LOCATED WITHIN THE INDEX AREA INDICATED.



COPLANARITY IS DEFINED AS THE VERTICAL DISTANCE FROM THE SEATING PLANE TO THE LOWEST POINT ON THE PACKAGE BODY EXCLUDING THE LID AND OR THERMAL ENHANCEMENT ON CAVITY DOWN PACKAGE CONFIGURATIONS.



X1, X2 AND Y1 MINIMUM DIMENSIONS OF THERMALLY ENHANCED TYPES ARE VARIABLES DEPENDING ON DEVICE FUNCTION (DIE PADDLE SIZE) X1 AND Y1 MAXIMUM DIMENSIONS CAN BE EQUAL TO X AND 15.40±0.10 MAXIMUM DIMENSIONS. END USER SHOULD VERIFY ACTUAL SIZE OF EXPOSED THERMINAL PAD FOR SPECIFIC DEVICE APPLICATION.



DATUMS A & B TO BE DETERMINED AT DATUM H

STP (3D) FILE RECORD
3D FILE NAMES MAY EXCEED LENGTH REQUIREMENTS FOR SOME SOFTWARE TOOLS.

STP FILE NAME	DATE	ITEM NUMBER
MO-354A_PMS0-E11_l1p14-R6p6x15p5Z2p5-N21p11T0p58_A-A	AUG 2022	11-1023
MO-354A_PMS0-E23_l1p14-R15p1x15p5Z2p5-N21p11T0p58_A-B	AUG 2022	11-1023
MO-354A_PMS0-E23_l1p14-R15p1x15p5Z2p5-N21p11T0p58_A-C	AUG 2022	11-1023
MO-354A_PMS0-E23_l1p14-R15p1x15p5Z2p5-N21p11T0p58_B-A	AUG 2022	11-1023

JEDEC SOLID STATE PRODUCT OUTLINE Copyright © 2022 JEDEC	TITLE PLASTIC MULTI SMALL OUTLINE, 1.14MM PITCH, 15.40MM BODY WIDTH, RECT FAMILY PACKAGE	NUMBER MO-354	ISSUE A	DATE AUG 2022	SHEET i
----------------------------------------------------------------	------------------------------------------------------------------------------------------------	------------------	------------	------------------	------------

TASK GROUP CONTRIBUTORS

INFINEON TECHNOLOGIES AG

CHANGE RECORD

IF THE CHANGE INVOLVES ANY WORDS ADDED OR DELETED (EXCLUDING DELETION OF ACCIDENTALLY REPEATED WORDS), THE CHANGE IS TO BE INCLUDED BELOW. PUNCTUATION CHANGES MAY OR MAY NOT BE INCLUDED.

INITIAL ISSUE: A	DATE: AUGUST 2022	ITEM NUMBER: 11-1023
------------------	-------------------	----------------------

CHANGE RECORD HISTORY:

INITIAL ISSUE: -	DATE: -	ITEM NUMBER: -
------------------	---------	----------------

LOCATION:	CHANGED FROM:	CHANGED TO: